



HOLITY.COM

Wall-mounted baby changing table h464_281

Wall-mounted changing table for public toilets. Dimensions: W.76 x D.58.5 x h.14.5 cm. Capacity: 11 kg.

The **h464_281 wall-mounted changing table** is a technical solution designed to set up safe and hygienic changing areas in educational and public contexts, such as kindergartens, nurseries and collective toilets. The structure is designed to maximize the baby's safety thanks to the **raised perimeter edges**, which offer additional protection against side falls. Made with high-quality non-porous materials, this changing table guarantees high hygiene standards: the surface is completely washable and resistant to common disinfectants, allowing for deep sanitization between uses. The compact design and the provision for stable wall mounting make it an essential element for optimizing operational spaces without sacrificing robustness.

Technical features

- **Dimensions:** 76 (W) x 58.5 (D) x 14.5 (H) cm
- **Maximum capacity:** 11 kg
- **Installation:** Designed for wall mounting
- **Safety:** Raised anti-fall side edges
- **Hygiene:** Easily cleanable and disinfectable surface
- **Item weight:** 10 kg
- **Structure:** High-resistance monoblock

** Image for illustrative purposes only*

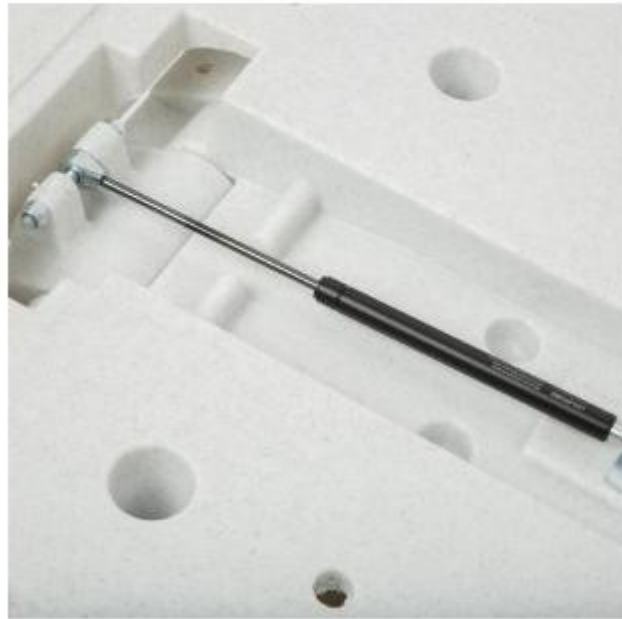
INFORMATION

- **Width in millimeters** 760.000000
- **Depth in millimeters** 585.000000
- **Height in millimeters** 145.000000
- **Tipologia fasciatoi** Orizzontale
- **Material** materiale plastico

Wall-mounted baby changing table h464_281



HOLITY.COM



HOLITY.COM



HOLITY.COM

Wall-mounted baby changing table h464_281

Width in millimeters: 401 mm

Depth in millimeters: 400 mm

Height in millimeters: 399 mm

Tipologia fasciatoi: Orizzontale

Material: materiale plastico