



Indoor recycling station h719_05

Set of 4 recycling containers. Capacity: 4 x 70 lt. Dimensions: W.81 x D.77 x h.86 cm.

Indoor recycling station, ideal for shopping centers, universities and offices. Composed of **4 containers** for the collection of 4 different types of waste, identifiable by the different colors of the lid. Each container is equipped with a **galvanized steel internal bin** which can be conveniently emptied and removed by opening the **front door complete with a key lock**. Waste insertion is practical and hygienic thanks to the **swinging lid**. The base of the containers has **2 adjustable feet** at the front, which serve to compensate for any unevenness in the floor.

Technical features;

- Dimensions: W.81 x D.77 x h.86 cm
- Material: galvanized steel sheet
- Capacity: 4 x 70 lt
- Swinging lid
- Front door with key lock (key included)
- Galvanized steel internal bin
- Adjustable front feet
- Lid perimeter colors: yellow, blue, green and black
- DIN 4102, fire protection class A1

INFORMATION

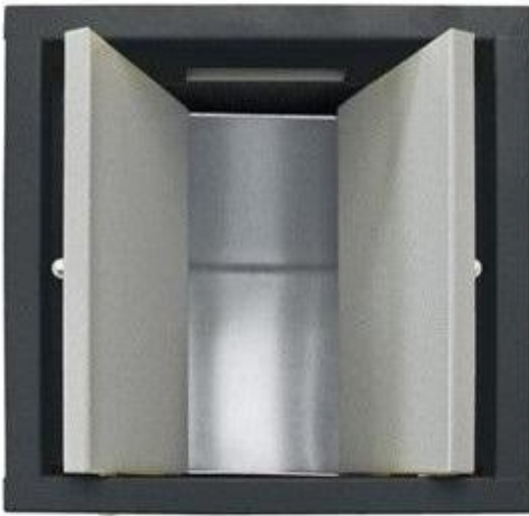
- Height in millimeters 860.000000
- Width in millimeters 810.000000
- Depth in millimeters 770.000000



HOLITY.COM



HOLITY.COM



HOLITY.COM



HOLITY.COM