



Indoor recycling station for waste separation h719_03

Set of 4 recycling bins. Indoor use. Capacity: 4 x 30 l. Dimensions: W.61 x D.61 x h.60 cm.

4-bin recycling station, perfect for installation in public places such as shopping centers, stations and airports. Each container is equipped with a **swing lid** that allows for practical and hygienic waste disposal and a **removable internal container** that can be emptied by opening the front door provided with a key lock. To allow for correct waste separation, the containers are provided with **top elements in different colors**. The structure is made of **galvanized sheet steel** and features **adjustable front feet** at the base that ensure stability even on irregular floors.

Technical features;

- Dimensions: W.61 x D.61 x h.60 cm
- Material: galvanized sheet steel
- Capacity: 4 x 30 l
- Swing lid
- Front door with key lock (key included)
- Internal container in galvanized steel
- Adjustable front feet
- Lid perimeter colors: yellow, blue, green and black
- DIN 4102, fire protection class A1

INFORMATION

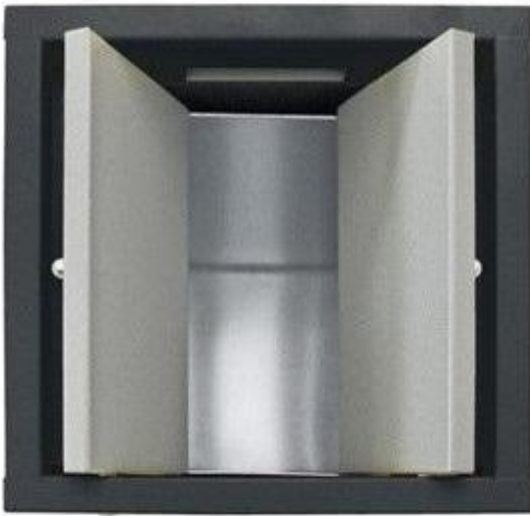
- Height in millimeters 600.000000
- Width in millimeters 610.000000
- Depth in millimeters 610.000000



HOLITY.COM



HOLITY.COM



HOLITY.COM



HOLITY.COM