

Design planter for urban furniture h867_19

Elegant steel planter for urban furniture. Dimensions: L.1240 x D.1080 x H.420 mm.

Planter for urban furniture with an elegant design, ideal for urban contexts but also for seaside locations. The article features a **structure in 60 x 40 x 2 steel tube** and sheet metal with a thickness of 5 mm and a 20 x 10 mm steel plate. The internal container is made of **galvanized steel sheet** with a thickness of 2.5 mm.

Powder coating ensures resistance against atmospheric agents

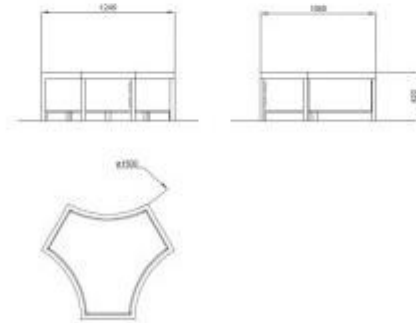
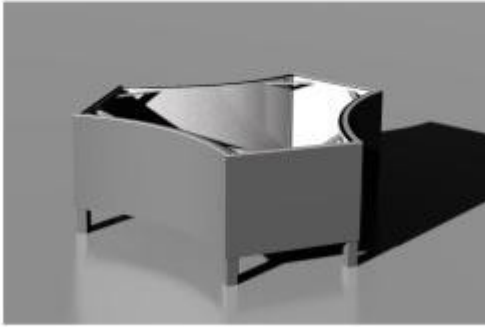
Technical features:

- Material: steel
- Steel tube frame 60 x 40 x 2
- Elegant design
- Powder-coated finish
- Length 1,240 mm
- Height 420 mm
- Width 1,080 mm
- Color: RAL 7016

**image purely indicative*

INFORMATION

- **Length in millimeters** 1240.000000
- **Depth in millimeters** 1080.000000
- **Height in millimeters** 420.000000
- **Planter material** metallo



Design planter for urban furniture h867_19

Length in millimeters: 407 mm
Depth in millimeters: 400 mm
Height in millimeters: 399 mm
Diameter: 575 mm