



Blood collection chair h582_146

Blood collection chair with padded surface. Reclining backrest and leg rest. Dimensions: L. 180 x W. 78 cm.

Medical chair for blood collection, ideal for hospitals and medical offices. The chair features an **integrated padded headrest**, **armrests** manually adjustable in height, in inclination and rotatable 360°. The chair has **4 electric motors** managed by a single control panel to **adjust height, backrest inclination, leg rest inclination**. The chair is equipped with a **roll holder and remote control holder**. The base features **4 swivel castors**, each with an independent brake.

Technical Features:

- Frame material: painted steel
- Upholstery: PVC/polyester
- Maximum capacity: 200 kg
- Dimensions: L. 180 x W. 78 cm
- Seat height: from 52 to 92 cm
- Power supply 100-240 V 50/60 Hz 145 VA
- Electrical protection class Class II
- Noise level:
- Maximum seat width: 60 cm
- Weight: 85 kg
- EC declaration of conformity according to EU regulation 2017/745
- Complies with the following international standards: EN ISO 14971:2019- EN ISO 15223-1:2021- EN 60601-1:2006- EN 60601-1-2:2015
- Made in Italy

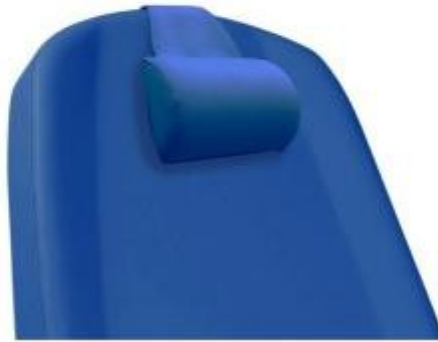
INFORMATION

- **flow rate** 200 Kg
- **Operation** Elettrico
- **type height** variable

Blood collection chair h582_146



HOLITY.COM



HOLITY.COM



HOLITY.COM



HOLITY.COM



HOLITY.COM

Blood collection chair h582_146

Flow rate: 200 Kg
Operation: Elettrico
Type height: variable